



O T A M

85 GLS



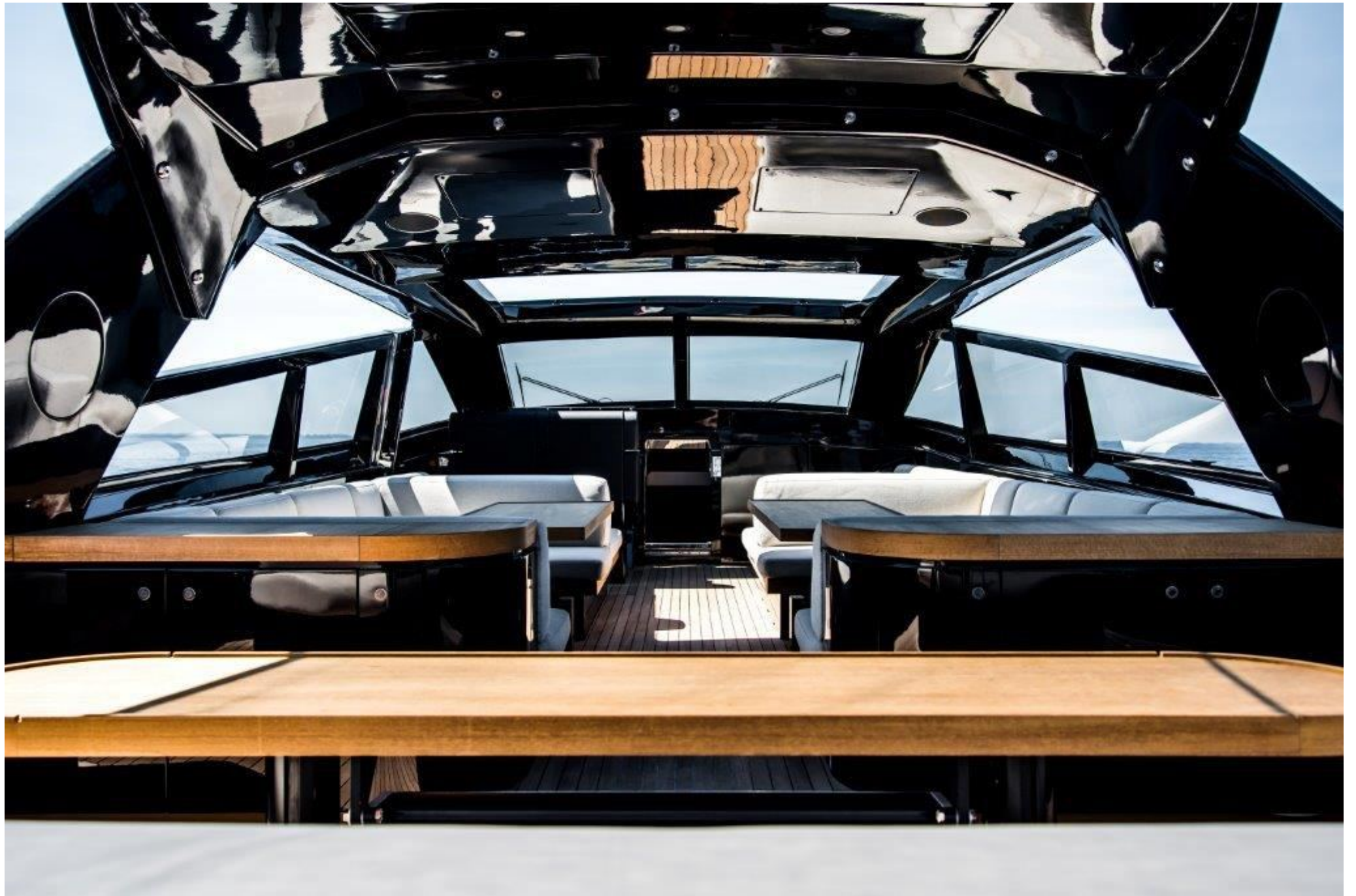












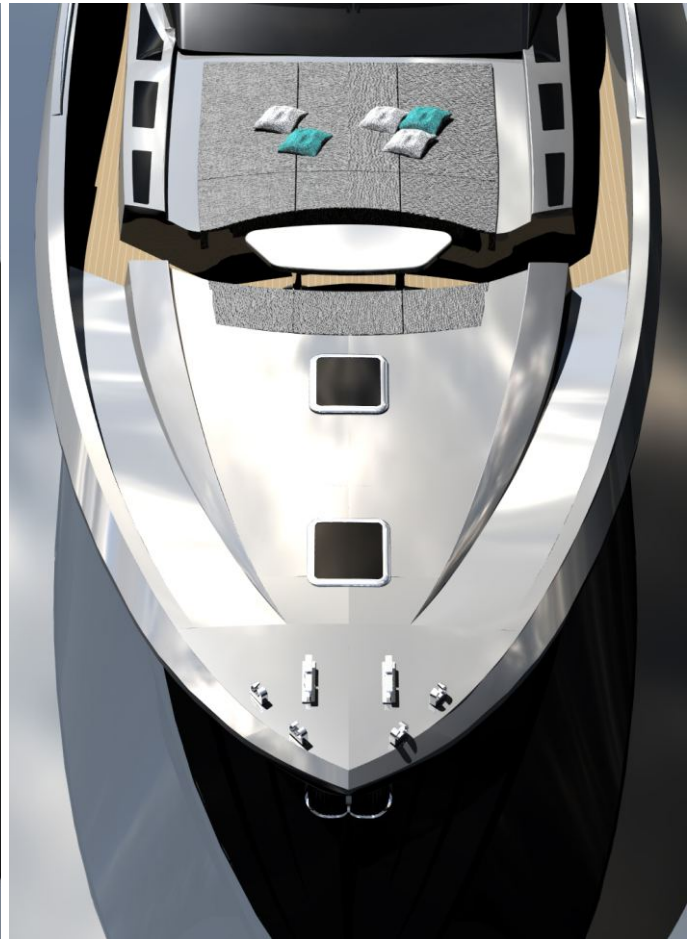


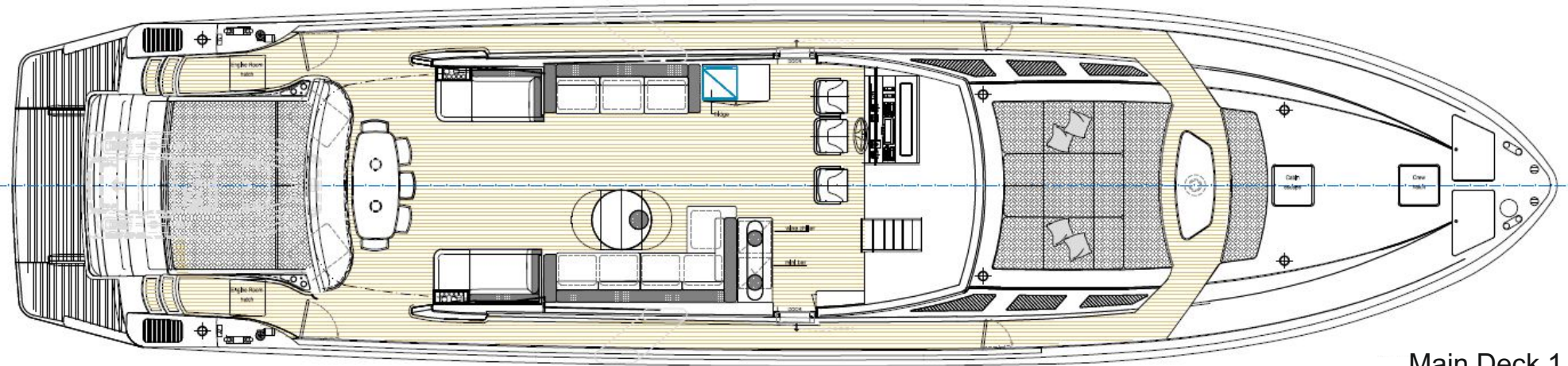




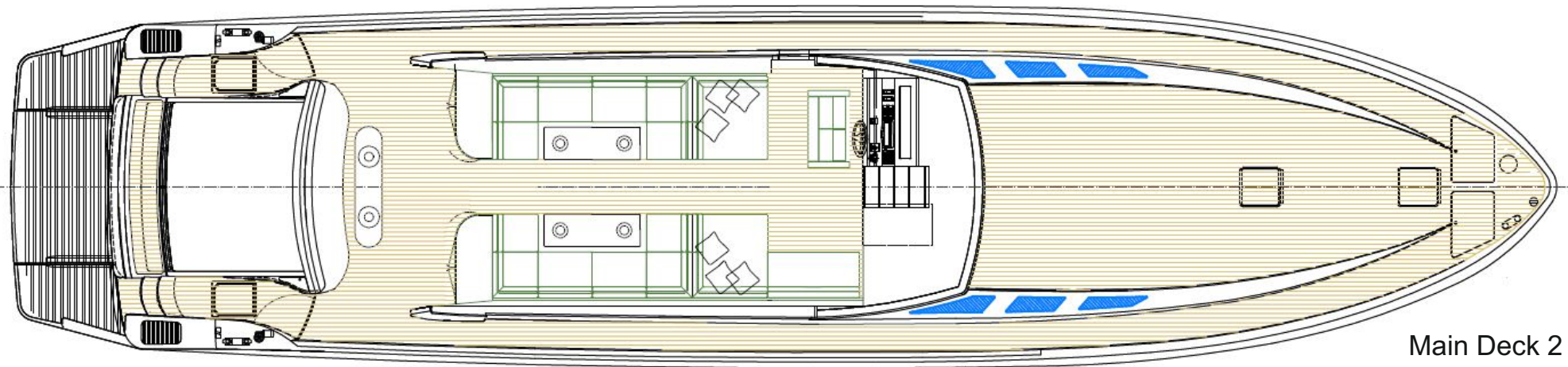






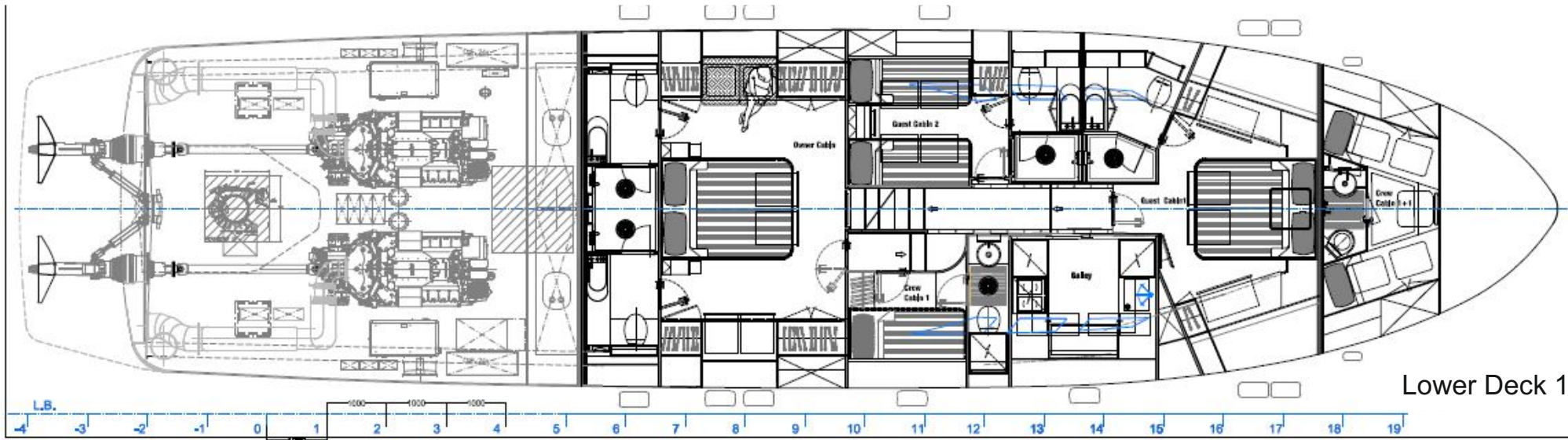


Main Deck 1

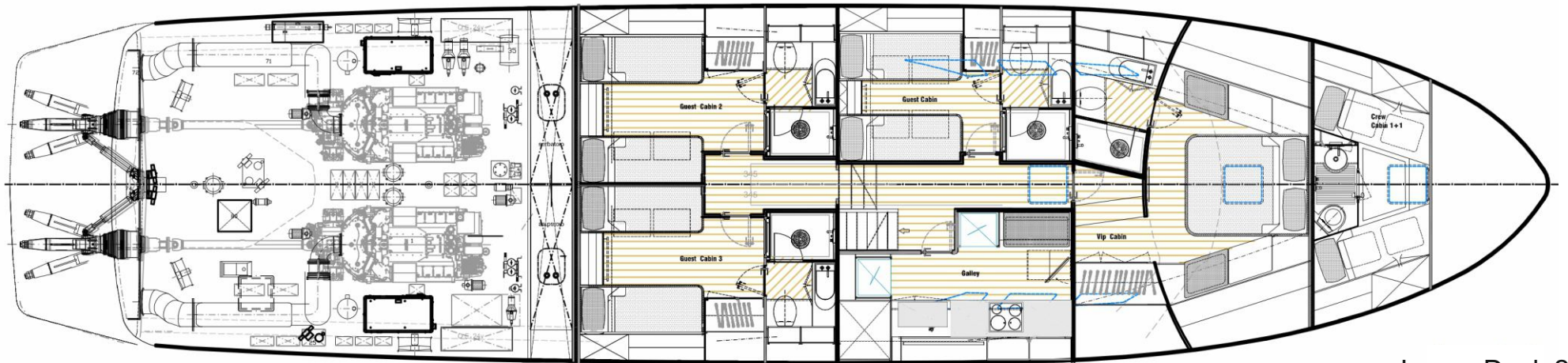


Main Deck 2

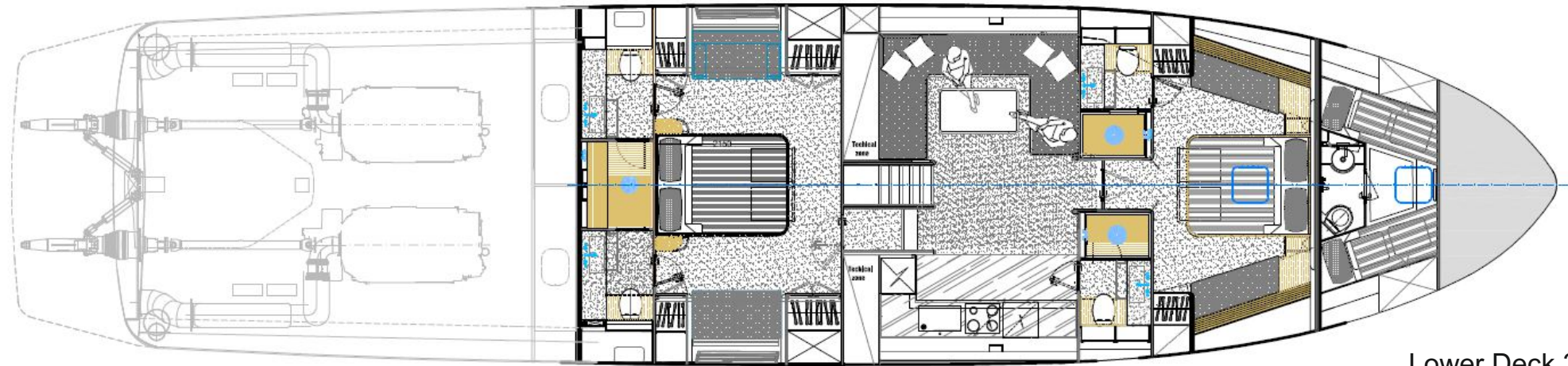




Lower Deck 1



Lower Deck 2



Lower Deck 3



Lower Deck 4



TECHNICAL SPECIFICATIONS

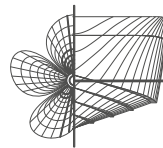
O T A M **85 GTS**

Length overall 25.75 m
Length ISO 8666 23.95 m
Waterline Length 21.50 m
Beam max 6.00 m
Draft, full loaded 1.40 m
Fuel tank capacity 8000 lt
Hull VTR + Kevlar
Superstructure VTR + Kevlar
Owner&Guests cabins 3/4 cabins
Accommodation for Crew 1/2 cabins
Main engines N°2 MTU 16V 2000 2600 HP 2300 RPM
or N°2 CAT C32 1925 HP 2300 RPM
MTU Opt. Maximum speed (1/3 load displacement) ~ 45+ knots
Cruising Speed ~ 40 knots
CAT Opt. Maximum speed (1/3 load displacement) ~ 38 knots
Cruising Speed ~ 32 knots
Propulsion system ARNESON
Generators N°2 x 18 kW cad
opt. n°1 Max Tender Length 3,20 m
opt. n°2 Max Tender Length 3,95 m
Stabilizer system optional



OTAM srl

Via Cibrario, 2 - 16154 Sestri Ponente - Ge
ph. +39 010 601901 fax +39 010 6512651
www.otam.it - uff.commerciale@otam.it



Umberto Tagliavini
marine design & services

naval architecture
& marine engineering
Reg. Tecn. CAP GE Nav.
Arch. n.248
Perito Tribunale -
Socio AsProNaDi

16035 Rapallo (GE) Italy
via Fioria 6/2
phone +39.0185.233521
mobile +39.335.6252596
info@marinedesign.it

Interior and exterior layout and style by
Joseph Dirand Architecture
in full cooperation with Otam

This Brochure was created by Clara Moltedo of Umberto Tagliavini's marine design & services studio for OTAM s.r.l. All rights reserved.

Reproduction and copying is generally prohibited without prior written permission from OTAM s.r.l. or by Umberto Tagliavini.